



First Floor Flat, 465  
Marine Road East, Bare,  
Morecambe LA4 6AF

465, Marine Road East, Bare, Morecambe

## *The property at a glance*



- First Floor Apartment - Offered With No Chain Delay!
- Uninterrupted Sea Views
- Spacious Lounge
- Double Bedroom
- Kitchen Diner
- Village Amenities & Transport Links
- Stunning Coastal Walks
- Tenure: Freehold
- Property Band: A
- EPC: D



Get in touch today

01524 401402  
info@gfproperty.co.uk  
gfproperty.co.uk

# £135,000

# Get to know the property



Positioned on Marine Road East in the charming village of Bare, Morecambe, this delightful one-bedroom apartment offers a perfect blend of comfort and stunning natural beauty. As you step inside, you are greeted by a lovely reception room that seamlessly opens to a well-appointed kitchen, creating an inviting space ideal for both relaxation and entertaining.

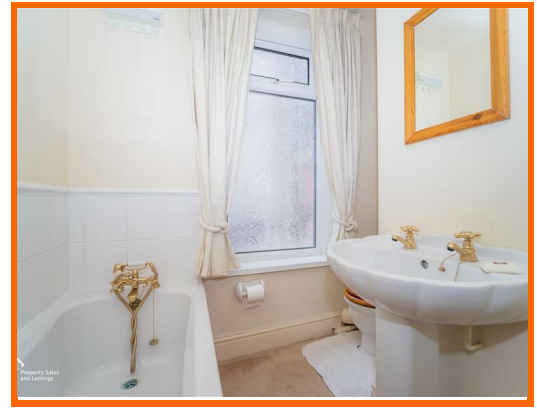
One of the standout features of this property is the panoramic sea views that can be enjoyed from various vantage points within the apartment. Imagine waking up each morning to the gentle sound of waves and the breathtaking sight of the coastline stretching out before you. This apartment truly embodies the essence of coastal living.

In addition to its picturesque views, the location is highly convenient, with local amenities just a stone's throw away. Whether you are in search of shops, cafes, or recreational facilities, everything you need is within easy reach, making this property an excellent choice for those who appreciate both tranquillity and accessibility.

This apartment is perfect for individuals or couples seeking a serene retreat by the sea, while still being close to the vibrant community of Morecambe. With its charming features and enviable location, this property is not to be missed. Come and experience the beauty and comfort that this apartment has to offer.

For further information, please contact the office at your earliest convenience.





### **Reception Room**

UPVC double glazed windows, central heating radiator, coving, open front gas fire, wood single glazed frosted French doors to kitchen.

### **Kitchen/ Diner**

UPVC double glazed window, central heating radiator, smoke alarm, range of wall, drawer and base units, integrated sink with mixer tap, freestanding oven with 4 ring hob, plumbing for washing machine, open to hallway.

### **Hallway**

Stairs to bedroom, bathroom and fire exit door.

### **Bathroom**

UPVC double glazed frosted window, central heating radiator, half tiled to complement, low rise WC, pedestal wash basin with traditional taps, panelled bath with mixer tap and rinse head.

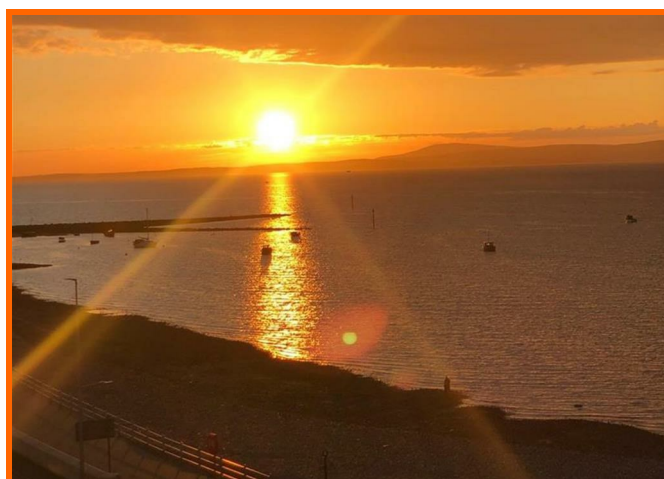
### **Bedroom**

UPVC double glazed window, central heating radiator, built-in wardrobe, concealed combi boiler.

# First Floor Flat, 465 Marine Road East, Bare, Morecambe, LA4 6AE



# First Floor Flat, 465 Marine Road East, Bare, Morecambe, LA4 6AE



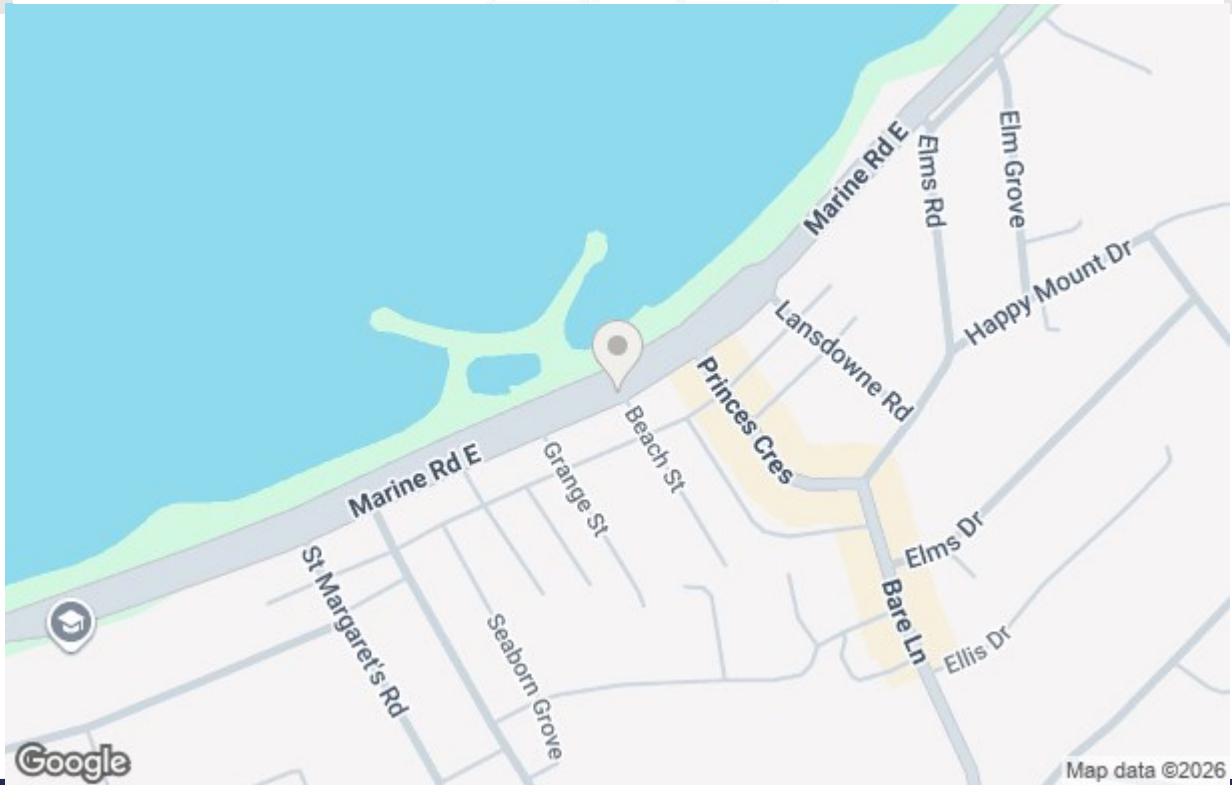
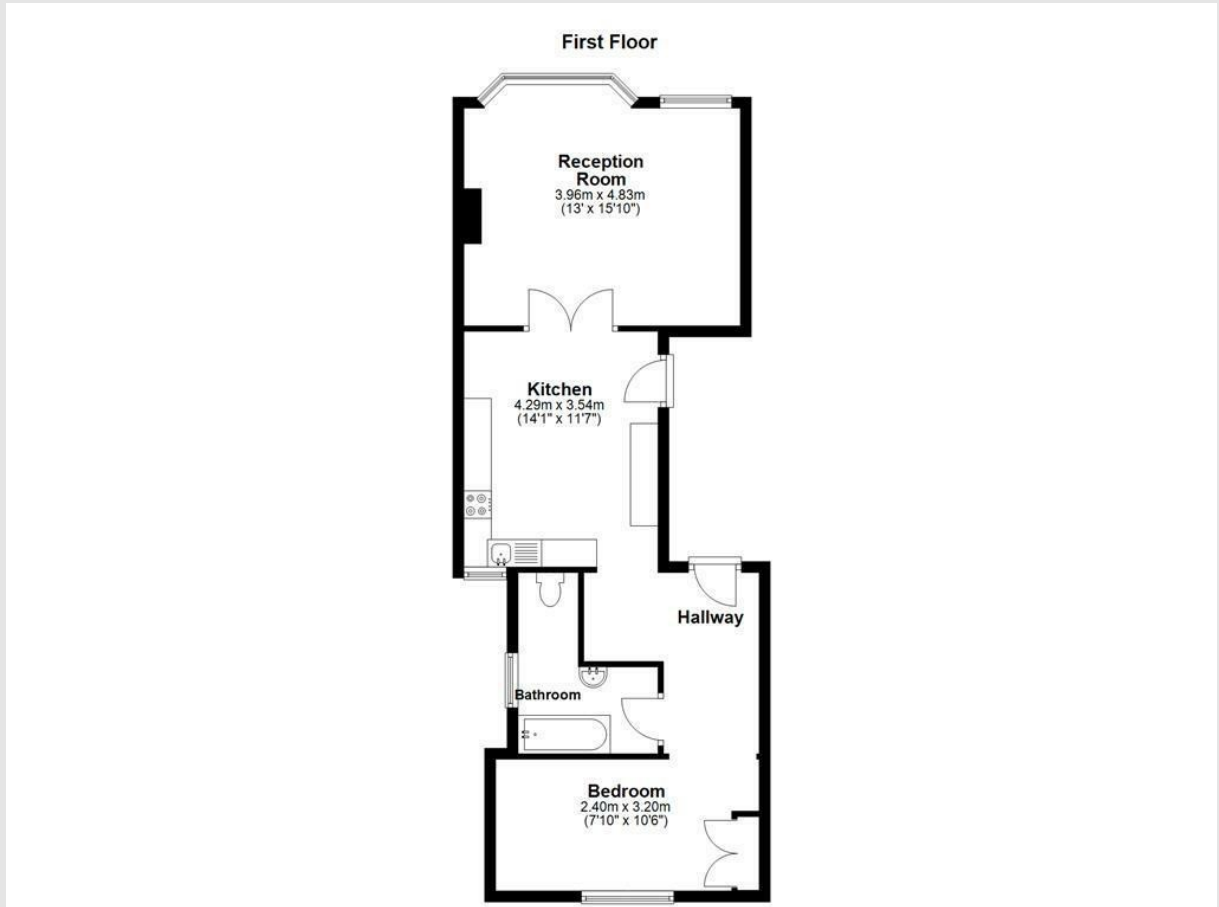
Get in touch today

01524 401402

[info@gfproperty.co.uk](mailto:info@gfproperty.co.uk)

[gfproperty.co.uk](http://gfproperty.co.uk)

# Take a nosey round



Get in touch today

01524 401402  
[info@gfproperty.co.uk](mailto:info@gfproperty.co.uk)  
[gfproperty.co.uk](http://gfproperty.co.uk)

Energy Efficiency Rating	
Current	Potential
68	78

Very energy efficient - lower running costs

(92 plus) **A**

(81-91) **B**

(65-80) **C**

(55-64) **D**

(39-54) **E**

(21-38) **F**

(1-20) **G**

Not energy efficient - higher running costs

England & Wales EU Directive 2002/91/EC

Environmental Impact (CO <sub>2</sub> ) Rating	
Current	Potential

Very environmentally friendly - lower CO<sub>2</sub> emissions

(92 plus) **A**

(81-91) **B**

(65-80) **C**

(55-64) **D**

(39-54) **E**

(21-38) **F**

(1-20) **G**

Not environmentally friendly - higher CO<sub>2</sub> emissions

England & Wales EU Directive 2002/91/EC